

A cut up procedure air conditioning need to experience boring inside the preferable approach. You set a temperature, it hums alongside, and also you fail to remember approximately it. When it begins playing up, it should be tempting to on the spot call an engineer. Sometimes that's the good go, highly with refrigerant faults or electrical burning smells. But simply as incessantly, the "breakdown" seems to be something you are able to slim down simply at dwelling house, save dollars, and restrict an pointless go to.

I've misplaced depend of the wide variety of callouts that ended up being blocked drains, a tripped breaker, a faraway handle element, or a unit that was never as a matter of fact in cooling mode. It's no longer glamorous troubleshooting, however [Air Conditioning Essex](#) it's effective, and it allows you communicate the comparable language because the technician in case you do call.

Below is a realistic help to what to examine first, what you need to no longer contact, and the small print engineers in the main need to know.

Start with the basics: what precisely is going down?

Before you open covers or bounce toggling matters, take a breath and describe the fault. "It's no longer running" is genuine, yet it does not guide absolutely everyone.

Ask yourself a couple of concrete questions, then healthy them to what you're seeing:

- Is the aircon permanently lifeless, without a lighting and no airflow?
- Does it persistent on, then forestall after a few minutes?
- Is it blowing air but no longer cooling or no longer heating?
- Is it noisy, misty, or blowing heat air in cooling mode?
- Do you notice water dripping or listen a gurgling sound?

If you're able to, also be aware when it fails. Some models run for hours, then shut down when a safeguard threshold journeys. Others fail at once when the compressor tries to begin. Those styles aspect to assorted causes, like condensate drainage difficulties versus electric or inverter troubles.

If you're cozy with it, stand close and pay attention. A faint fan strolling however no compressor is a numerous story than a fan not strolling at all. Many brand new techniques will nonetheless circulation air once they stumble on a fault, but they're going to refuse to begin the compressor if readings are off.

Confirm force and controls, not just the remote

People ordinarily count on the far off is the downside because it appears like the apparent offender. In my feel, that's merely about half of the time. Still, it's worth checking as it takes mins and also you'll waste less time later.

Try those assessments:

1. Are there any lighting fixtures on the indoor unit?

Even a blinking LED can be certain the manipulate board has continual.

2. Is the outdoor unit working?

After you command cooling or heating, you may still suppose or pay attention a thing from outdoor inside of a quick time. If the outside unit is silent, you would have a strength minimize, tripped upkeep, or the system refusing to begin.

3. Is the remote clearly set to the good mode?

Cooling mode must instruct cooling on the display, and heating mode should exhibit heating. I've obvious multiple "no cooling" criticism that turned out to be the unit in warmness mode, highly when men and women swap seasons quick.

4. Check the far flung batteries.

Weak batteries can nonetheless drive the display screen however fail to ship a actual signal. Replace them, then are trying returned.

5. Watch for a reset behaviour.

If drive resets not too long ago, the unit also can need to reinitialize. Some methods are choosy about reboots, tremendously if the breaker become off and then on promptly.

You're no longer trying to be a technician. You're attempting to choose whether the issue is potential, manipulate common sense, or the refrigeration manner.

Look for basic airflow disorders that mimic "a breakdown"

Aircon faults more commonly instruct up as "no chilly air," even when the refrigeration part is superb. Restricted airflow can motive safe practices trips or make the process so inefficient that it turns out damaged.

Start with what you would see:

- **Is the indoor grille dusty?** A thick coating can cut down airflow enough to cause preservation.
- **Is the clear out overdue for cleansing?** If the unit has removable filters, investigate them. A clogged filter also can make the room smell stale and may slash cooling overall performance dramatically.
- **Is the fan velocity set too low?** Some remotes default to "car" and might decide a tender pace. That can hinder the room from shedding briskly.
- **Are vents blocked?** A settee pushed in opposition to a wall, curtains over vents, or furnishings blocking flow can make you suspect the machine is failing.

If you fresh filters, do it lightly. I once noticed a home owner scrub a filter adore it become a scouring pad, then whinge the unit "in no way worked the identical returned." The clear out is most commonly designed for rinsing and drying, no longer brute drive. If it's broken, replace it other than forcing it again into situation.

Check drainage and water signs early, distinctly in cooling mode

This is one of the such a lot widely used "air con breakdown" causes I've visible: condensate drainage problems.

When a split system cools, moisture bureaucracy at the indoor coil. That water have to drain away by the use of a condensate pipe or a pump, depending on how your components is mounted. If the drain line is partially blocked, chances are you'll see:

- water pooling indoors

- a drip near the indoor unit
- a gurgling sound from the drainage area
- the unit shutting off after running

If you've got you have got a drain pan with a waft switch, the system might also cease to stay away from overflow. That can think like a mysterious failure, yet it's in reality doing what it must always.

What you will correctly do:

- Look around the indoor unit base and the nearest drain route for indications of wetness.
- If you may have get entry to to the condensate outlet, investigate for kinks or transparent blockages.
- If the unit has a seen drain line, verify it's not beaten or sagging.

What now not to do:

- Don't pour random chemicals into a sealed technique except your handbook or installer exceptionally recommends it.
- Don't dismantle drainage resources that you do now not take into account, notably if refrigerant strains are regional.

If you think drainage blockage, it's still mostly a brief repair for an engineer, yet addressing it faster can keep water break to ceilings, skirting, or plaster.

Power defense and "secret trips"

A lot of aircon callouts show up after any individual turns one thing off at the incorrect time, as an instance a breaker left off after upkeep, or a recent power surge.

Signs you're coping with a capability safety subject embrace:

- the indoor unit powers up however compressor won't start
- the approach begins then stops repeatedly
- a humming sound, then instant silence
- tripping of a breaker inside the property

If a breaker is tripped, reset it and are attempting a unmarried restart. If it journeys once more abruptly, stop. Repeated resets can boost the danger of electrical harm.

A quickly note on safety: while you odor burning plastic, see scorched marks, or detect sparking, do now not prevent trying out it. That's not "DIY troubleshooting," that's a cease-and-call crisis.

Aircon now not cooling true: check the most obvious sooner than blaming refrigerant

When anybody says "it's now not chilly," the intellect jumps straight to refrigerant. Refrigerant themes can manifest, however the manner has many other techniques to underperform.

Start with those practical checks:

- **How lengthy has it been walking?** Some contraptions need longer to drag down the room temperature. If the room is already scorching, the first 20 to 40 mins can sense underwhelming.

- **What is the set temperature?** Set it to anything intelligent, now not extreme. If your unit is making an attempt to battle an overloaded warm load, it'll run consistently.
- **What is the out of doors temperature?** In very top warm, some systems struggle if they are undersized for the gap.
- **Is the indoor fan blowing good airflow?** Weak airflow indicates clear out or coil airflow restriction.
- **Is the mode no doubt cooling?** It sounds ordinary, but it's a repeat perpetrator.

If all of those look at various out and the air continues to be lukewarm after an affordable time, that's whenever you commence excited about factor faults, adding refrigerant method concerns, sensor readings, or compressor/inverter complications.

Strange noises and smells: treat those as "use your judgment" signals

Aircon gadgets should be would be could very well be noisy, but exact noises should make you stop and contact a expert.

A few examples from truly-global event:

- **Rattling from the indoor unit** more commonly issues to a unfastened grille or fan obstruction.
- **Grinding or loud knocking** can counsel a fan blade challenge or a worry with transferring constituents. Don't run it like that.
- **A burning smell** is a protection purple flag. Turn the formula off.
- **Strong musty smells** steadily relate to grimy coils or trapped moisture. Filters and visual growth need properly cleaning.

If you may have pets, smoke, or cooking vapours close to the consumption, the unit can clog speedier than you'd be expecting. That doesn't mean the air conditioning is faulty, it capacity renovation matters.

When you must always call an engineer directly away

Most home owners can do a honest volume of dependable checking, however there are facets where DIY becomes volatile or pointless. Call an engineer faster if:

- the unit gained't potential on and you believe an electric fault on the isolator or wiring
- breakers ride repeatedly
- you notice water wreck or energetic leaking
- there's a burning scent, seen scorch marks, or sparking
- the unit runs but journeys into error commonly, and you are not able to identify the motive from the manual

Engineers have the appropriate tools to test pressures, test sensors, and fee for faults without guessing. For refrigerant tactics, fallacious coping with could also make the issue worse.

A immediate "formerly the decision" note

When you ring, have these details all set. It shortens the call and avoids back-and-forth.

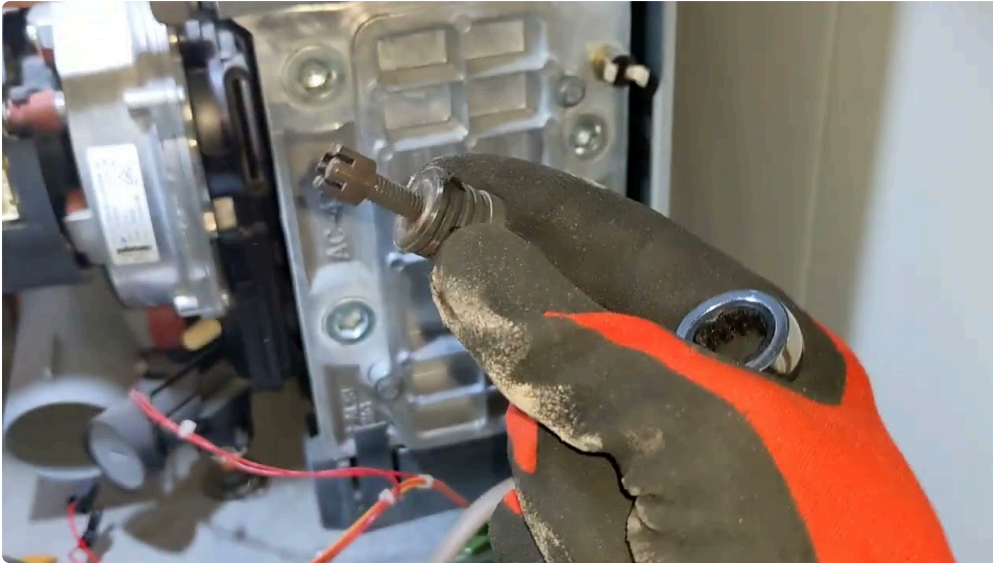
- mistakes code proven on the indoor unit demonstrate (if any)
- whether or not the indoor fan runs

- whether or not the backyard unit starts
- what mode you were utilizing (cooling or heating)
- regardless of whether there's any water leakage

Those data allow a technician slender it down sooner than arrival.

What to write down for the technician (and why it saves funds)

When an engineer arrives, they wish to be aware of the story, now not simply the indications. The extra one can describe, the turbo they may be able to diagnose.



Here's the common files to catch. It's not a guidelines you ought to do perfectly, however having it is helping:

- any visual blunders codes or flashing lights
- what you've already tried, far off reset, clear out easy, breaker reset
- how long it runs prior to failure, as an example "two mins then stops"
- unusual sounds or smells, which include any water dripping
- whether different home equipment at the related circuit are affected

Even once you simply recall part of that, your engineer will handbook you. Still, this is often the quickest course to a actual diagnosis, other than trial runs.

The "renovation gap" drawback, and why breakdowns cluster

Aircon breakdowns are not often random. In properties with poor maintenance behavior, faults cluster around the related time every single 12 months. Filters go unchanged for months, drainage gets unnoticed, and the outdoors unit picks up particles.

I've visited houses in which the air conditioning used to be "nice" true up until eventually the peak sizzling week. Then it failed. In many cases, it wasn't a surprising catastrophe, it became a slow decline. Filters were packed, airflow dropped, the system worked more difficult, then hit a defense threshold.

This can be why other people repeatedly confuse "air con breakdown" with "I need a new unit." If the unit is electrically sound and the airflow and drainage themes are addressed, overall performance can go back

relatively immediately.

How your private home strategies attach, even when they are separate

This may perhaps pontificate—subject matter, but it matters: aircon functionality will likely be affected by the identical area troubles that have an effect on gasoline home equipment, boilers, and usual plumbing.

If your place additionally has older heating structures, chances are you'll already be thinking about **boiler service** or **boiler repair**. The key level is that comparable safety and upkeep behavior scale back downtime throughout the board. For instance, a spouse and children that ignores condensate and drainage around one approach mostly ignores it in other places too.

If you've got you have got a **gas fire service** or a **gasoline protection certificate** schedule arising, it's an effective time to ask about ventilation and widely wide-spread safe practices in the surrounding places, in particular if any pipework or flues were altered. Aircon and gas home equipment do not percentage the similar circuits, yet cramped plant locations, shared voids, and ceiling penetrations can overlap in genuine installations.

If you run an LPG or combined-fuel setup, like a few small organizations, upkeep habits emerge as even more substantial. A burger van fuel setup, case in point, has its own variety of reliability stress, but the theory is the related: safeguard assessments evade small faults from turning into greater trouble. For homes and small websites, that related frame of mind applies to air-con, too.

Don't unintentionally void your warranty or create a larger repair

It's known to peer other folks strive DIY cleaning, repeatedly with competitive chemicals. If your air con is lower than warranty, use caution. Some producers specify licensed cleansing methods or require filter cleaning schedules to be adopted a certain manner.

Also, keep beginning electric panels unless you know precisely what you're doing. Even in case you're "easy," aircon tactics contain top-voltage resources and refrigerant piping. A small mistake can turn a minor fault right into a steeply-priced one.

If you're in doubt, stick to protected exterior exams, filter cleaning if the handbook allows it, and straight forward faraway or vigor resets.

Two sensible eventualities: what they many times mean

Scenario A: it activates, fan runs, however cooling is weak

This in most cases elements to airflow limit (filters, vents), a wrong mode placing, out of doors coil considerations, or a failing ingredient that prevents desirable compressor operation. It may be sensor similar. If it smells dusty or musty, coil cleanliness is more likely. If it cools in short then stops, security insurance plan perhaps in contact.

Scenario B: it fails instantly, or water appears

This steadily factors to drainage blockage or a shutdown triggered with the aid of a defensive flow transfer. It's also likely that the device is detecting a coil freezing pattern using airflow regulations. Either way, water

presence adjustments the urgency point seeing that leaks can destroy surfaces long ahead of the aircon if truth be told fails electrically.

Could an unrelated protection activity assist?

Sometimes, sure, yet it relies upon on what else goes on.



If your house has widely used plumbing protection and also you've had disorders with blocked drains or negative waste glide, you'll in finding that condensate issues are much more likely. Slow drainage can give a contribution to backup round outside runs.

If you've got ongoing heating repairs, equivalent to **vigour flush** processes on a equipment that wasn't circulating effectively, that's a signal the belongings may also need a better study fluid management and sensors. While air con isn't the same as a boiler, a property this is consistently "just about coping" has a tendency to have greater customary sensor and manipulate irritations across platforms.

And while you're making plans a **boiler installation** or **gas cooker installation** or any inside pipework adjustments, it's value coordinating together with your installer so no person knocks a drain pipe or modifications airflow pathways for the air conditioning plant aspect. These aren't theoretical difficulties. They come about.

After the engineer fixes it: what to do so it doesn't return next week

Once the difficulty is repaired, the next failure prevention steps are most likely trouble-free and coffee money. The aim is to stay airflow and drainage sturdy and to cut back stress on the formula.

- Keep filters clear on agenda, now not whilst the airflow receives substantially weaker.
- Make convinced out of doors items live freed from leaf buildup and particles.
- Watch drainage facets after heavy rain or seasonal leap-up.
- If the unit has a protection mode in the app or far flung, use it as directed by means of the handbook.

A well-maintained air con has a tendency to act. When it does now not, it's generally in view that the underlying problem became under no circumstances clearly addressed, like persistent drainage restrictions or repeated airflow blockage.



Getting the good sort of assist, first time

When you call an engineer, don't simply ask "are you able to restoration it." Ask questions that exhibit even if they'll diagnose top.

For instance, ask:

- Will you payment airflow and drainage prior to assuming a refrigerant fault?
- Can you make certain what the mistake code skill on your findings?
- Will you examine sensors and protections, no longer simply reset and restart?

A well engineer will regularly need to peer the proof, no longer rely upon guesswork. If they start straight to exchanging portions devoid of clean trying out, that's a red flag.

If your unit uses today's controls, they might additionally suggest an operational overview. Simple such things as the best option mode use, warding off surroundings extremes, and jogging fan schedules can scale back repeated compressor strain.

The brief takeaway

Aircon breakdowns can suppose surprising, however the majority of the time there are early clues you could spot: persistent and mode considerations, airflow restrictions, drainage troubles, and seen safeguard indicators. Those assessments lend a hand you appreciate even if it's risk-free to avoid testing and whether or not the fault is in all likelihood a ordinary restore or some thing that needs real diagnostics.

If you gather the mistake code, ensure even if the indoor fan and outside unit beginning, and word any water or odor, you give your engineer a head soar. That basically manner a swifter prognosis, fewer return visits, and less time dwelling in warm rooms or bloodless drafts.

And once it's operating to come back, a little bit of upkeep discipline round filters and condensate is what retains the unit from "breaking down" at any time when the weather turns.