

Pests do not announce themselves with a drumline. They slip in along utility lines, under drafty doors, through torn screens, and inside grocery bags. By the time most homeowners notice the problem, the population is already active and reproducing. After two decades of walking crawlspaces and peering behind dishwashers, I have learned to look for the quiet clues that separate a minor nuisance from a situation that demands professional intervention. If any of the signs below feel familiar, it is time to consider qualified Pest Control Services before small problems become structural repairs or health issues.

1. Nighttime noises, especially in walls or ceilings

One thump on the attic floor at 2 a.m. Is easy to dismiss. Consistent scurrying, scratching, or gnawing, especially between 1 and 4 a.m., almost always points to rodents. Mice are light and quick. Rats move with heavier, slower intent. Squirrels favor dawn and dusk, and raccoons sound like they are dragging boots. Homeowners often assume a single visitor. In reality, a breeding pair of mice can produce 40 to 60 offspring in a year in favorable conditions. That means the odd scratch today can become a nightly chorus in a month.

Over the years, I have traced these sounds to chewed Romex wiring, soft ducting slashed open for nesting, and insulation redistributed like confetti. The hidden damage often costs more than the service call. If you hear regular activity overhead or behind the drywall, Rodent Extermination Services should be near the top of your call list.

2. Droppings, grease marks, or gnawing around food storage

Kitchens tell the truth. Dark rice-like droppings under a stove lip or behind a trash pull-out, pencil-thin grease rubs along baseboards, and shredded paper near a kickplate are rodent hallmarks. Cockroach frass, which looks like pepper flakes or coffee grounds, tends to collect in cabinet hinges and under the sink lip. Chewed cardboard cereal boxes or dog food bags point to both mice and pantry moths. When I inspect, I always bring a headlamp and a white index card. If I can swipe a surface and see peppery specs or smear a greasy runway, we are past the trial-and-error stage and into targeted Insect Control Services and exclusion work.

3. Wings on windowsills or mud tubes near the foundation

Termites are quiet, which is exactly what makes them expensive. A sudden pile of translucent wings near a window in springtime is a classic sign of a termite swarm. Outdoors, look for pencil-thick mud tubes bridging from soil to siding or slab edges. Tap a baseboard and it sounds papery or hollow. I have seen homes in humid regions like along Florida's Gulf Coast or near the bayous outside New Orleans where subterranean termite pressure is constant. In parts of North Carolina's coastal plain, tubes appear beneath raised porches as neatly as weather stripping. Termite Control Solutions range from liquid trenching to bait stations, but deciding which fits your property and soil type is not a one-size call. When you see wings, act promptly. Swarmers disperse in hours, but the colony that sent them has been feeding for months.

4. Bites that appear in lines or clusters, plus rusty specks on bedding

Few problems unravel a household faster than bed bugs. People often self-diagnose spider bites, then spend weeks cleaning and laundering without effect. Bed bug bites frequently appear in linear or triangular clusters on exposed skin. Tiny fecal spotting on pillow edges or mattress piping looks like someone dotted the fabric with a

fine marker. Lift the headboard and check screw holes. That is where I find early harborages in upscale apartments and simple guest rooms alike.

Pest Control for Bed Bugs is less about chemicals and more about precision, heat, containment, and follow-up. Over-the-counter foggers scatter populations into [certified exterminator near me](#) baseboards. Professionals use encasements, steam, directed treatments, and inspection checkbacks set to the insect's life cycle. If you travel frequently, especially through hubs like Hartsfield-Jackson in Georgia or Los Angeles International in California, you carry higher exposure risk. Store your suitcase in a garage or on a tile floor for 48 hours after each trip, and still call a pro at the first sign of activity.

5. Ants that reappear after baits or sprays

Ants can be seasonal, but recurring trails that return after you spray usually indicate a satellite colony pattern. Argentine ants in parts of California around the Bay Area form massive supercolonies. Fire ants in Texas fields near the Alamo region need very different strategy than the odorous house ants that march across a Charlotte, North Carolina countertop. I have seen homeowners kill foragers again and again while the queen remains untouched. When you see ants changing routes or nesting points after you apply DIY bait, it means they are avoiding your approach. Professional Insect Control Services choose slow-acting baits that transfer across workers and select placement that maps to the species and its nutritional windows.

6. Persistent moisture problems and soft wood

Where wood gets damp, pests move in. Termites prefer moist wood, and carpenter ants follow water intrusions with a mason's patience. Silverfish and cockroaches thrive in damp basements and poorly vented crawlspaces. I once traced a steady parade of ants inside a ranch home in Alabama to a barely visible drip under a second floor shower. The joist end grain read like a sponge. The homeowner had sprayed at the baseboard for months. Fixing the plumbing leak plus focused control solved the problem, not more aerosol.

If you push your screwdriver into window trim and it sinks too easily, or if the base of a garage door jamb flakes under finger pressure, it is time for more than caulk. Moisture meters, inspection mirrors, and trained eyes save money because they focus treatment where the insects live, not where you happen to see them.

7. Unfamiliar wasp or bee activity near the home

Paper wasps build tidy umbrellas under eaves. Yellowjackets vanish into a ground hole then roar when disturbed. European hornets hover like little helicopters around porch lights at night. In South Carolina's coastal areas near Fort Sumter, I often find elevated nests in live oaks. In Mississippi towns near Vicksburg National Military Park, ground nests hide in lawn thatch. Untrained removal leads to emergency room visits. When stinging insects pick your property, look for professionals used to ladder work, vacuum traps, and the correct suits. Once the colony is removed, they can recommend sealing or changing nearby attractants.

8. Traps snapping with nothing in them, or untouched baits

Homeowners set a line of snap traps and call it done. When I see sprung traps without a catch, or baits untouched for days, I do not assume rodents are clever. I assume we used the wrong lure, placed it incorrectly, or ignored competing food. In a Texas garage near Space Center Houston, dry dog kibble outweighed any peanut butter I applied. In a Georgia pantry near Savannah's historic district, rodents preferred chocolate. Placement matters as much as product. Traps should straddle runways perpendicular to walls, not sit like islands. If your

efforts leave you with triggered traps and no results, consider professional Rodent Extermination Services before rats start nesting in car engine bays or wall cavities.

9. Seasonal swarms inside the home

Flying ants around a fixture, sudden gnats near drains, or fungus gnat blooms from overwatered houseplants can be seasonal. What worries me is swarming inside, especially around lights on calm evenings. Termites and some ant species release reproductives that follow light like ships to a lighthouse. Inside swarms suggest a colony has matured within the structure, not just outside. In humid zones like along Alabama's coast near USS Alabama Battleship Memorial Park, swarming events are common in spring and after heavy rains. Do not vacuum and forget. Save some specimens in a clear bag for identification. A pro can tell wing shape and waist segmentation at a glance, then design Termite Control Solutions or ant control that fits.

10. You keep treating, but the problem returns

I meet careful homeowners who clean, seal food, and maintain trim yards. They spray occasionally and set bait stations. Some succeed. Many chase symptoms. If you have treated the same bathroom for roaches three times in a year, or your patio is a revolving door of ant types, or fleas return every six weeks even with pet treatments, you do not have a product problem. You have a strategy problem. That is when Residential Pest Control adds value with inspection, species ID, habitat modification, and follow-up timed to the biology of the pest.

Why timing and location matter more than brand names

I can buy the same active ingredients that you can find at the hardware store. The difference is not just concentration, it is use pattern. Roaches do not respect labels. They follow water, warmth, and darkness. Ants do not read marketing claims, they follow pheromone highways and seasonal food shifts. In dry Southern California neighborhoods near the Hollywood Sign, ant populations spike after heat waves drive them in for moisture. In North Carolina's mountain corridors near the Biltmore Estate, carpenter ants often push into attic voids after spring thaws saturate old roof valleys. In Louisiana's French Quarter, older buildings with stacked renovations hide perfect bed bug harborage behind layered baseboards.

A seasoned technician decides where to place a non-repellent versus a repellent, when to choose gel baits over dusts, and how to balance mechanical exclusion with chemical control. Getting those trade-offs right means you treat less often with better outcomes, which is the very definition of Affordable Pest Solutions when you step back from the month-to-month frustration.

Quick diagnostic cues you should not ignore

- An ammonia or musty odor in a closed room with no visible mold, often from heavy roach populations.
- Thin sawdust-like frass under baseboards or door frames, a sign of carpenter ant or drywood termite activity.
- Popping or crackling behind a bathroom wall at night, which can be rodents interacting with plumbing chases.
- Piles of fine sand-like grains at the base of walls in coastal homes, sometimes from subterranean termite kick-out holes.
- A persistent trail of tiny black ants to a single electrical outlet, a classic sign of a nest behind the box.

If you see one of these but cannot locate the source, stop guessing. An inspection with light disassembly will reveal more in twenty minutes than a month of sprays.

What a professional brings that DIY usually cannot match

- Correct species identification, which determines bait choice and placement more than any other factor.
- Access to professional-only formulations and non-repellents that work through transfer within colonies.
- Structural exclusion, from sealing quarter-inch gaps to screening crawl vents, which reduces reinfestation.
- Monitoring and follow-up timed to egg cycles and seasonal changes, not just calendar reminders.

You will notice I did not include sheer force of chemicals. Modern Commercial Pest Management, even for restaurants or healthcare facilities, emphasizes minimal, targeted application combined with sanitation and maintenance. A home deserves the same standard.

Regional realities across the nine states we serve

Climate, building styles, and even landscaping norms shift pest pressure. Here is how I adjust plans across the states our team covers.

Florida sees high termite pressure and abundant roach species, from American to German to smokybrown. Homes near the Everglades or Orlando's busy corridors combine humidity with travel traffic, a perfect cocktail for both termites and bed bugs. For slab-on-grade homes, I often recommend a hybrid of baiting for long-term colony suppression paired with a liquid barrier in expansion joints and plumbing penetrations.

Texas splits between arid west and humid east. In Houston suburbs and around the Alamo City, fire ants and roof rats both appear in the same neighborhoods. Attics here often have generous space, which rodents love. A thorough exclusion with heavy-gauge screen and reinforcement around garage seals, followed by targeted trapping, generally outperforms bait-only programs.

California's coastal zones from San Diego to the Golden Gate Bridge wrestle with Argentine ants. Inland valleys add orb spiders and seasonal pantry pests. Older stucco homes hide weep screeds that ants use like highways. Non-repellent baits in shaded, protected placements plus landscape corrections, like lifting mulch off siding by at least two inches, make a measurable difference.

Louisiana's water-adjacent communities, especially in and around the French Quarter, deal with formosan termites, a particularly destructive species. Wood-to-soil contact under raised homes is common. We pair Termite Control Solutions with moisture management, adding vapor barriers and improving drainage as part of the service plan.

Georgia's mix from the Blue Ridge to the coastal plain means carpenter ants in mountain cabins and German roaches in dense urban housing. Near Savannah's historic district, I have found ant galleries inside heart pine trim, a reminder that cherished materials can also be habitats. A gentle hand, plus targeted treatments, preserves character while eliminating pests.

Alabama combines termite-rich soils with mosquito pressure. Around Mobile and the USS Alabama Battleship Memorial Park, crawlspace humidity is the universal driver. Encapsulation and dehumidification reduce almost every pest pressure, from roaches to silverfish, and make chemical control lighter and safer.

Mississippi homeowners near Vicksburg National Military Park see termite tubes appear on pier-and-beam supports like clockwork after heavy rains. Monitoring stations around the perimeter paired with quarterly inspections are not overkill here, they are maintenance, like changing HVAC filters.

South Carolina, from the Upstate to Charleston and the Battery, offers carpenter bees perfect fascia boards and balmy springs. Filling old holes and painting fascia deters new drilling. Yellowjackets in sandy soils create underground cities by July. Professional removal avoids a painful lesson.

North Carolina spans Outer Banks humidity to mountain cool in Asheville near the Biltmore Estate. Coastal homes with elevated decks develop ant superhighways along joists, while western cabins face cluster flies that fill attic windows every fall. Both problems yield to inspection-led strategies.

When to pick up the phone, and who to call

If any of the ten signs match your home, especially if you have attempted DIY without lasting relief, you are not early anymore. The ideal next step is an inspection that ends with a written plan. That plan should identify species, map contributing conditions, and propose a cadence. Monthly is not always correct. Bed bugs require an intense short-term pulse, then monitoring. Rodents demand exclusion first, then trapping. Termites deserve a multi-year strategy with documented station reads or barrier checks.

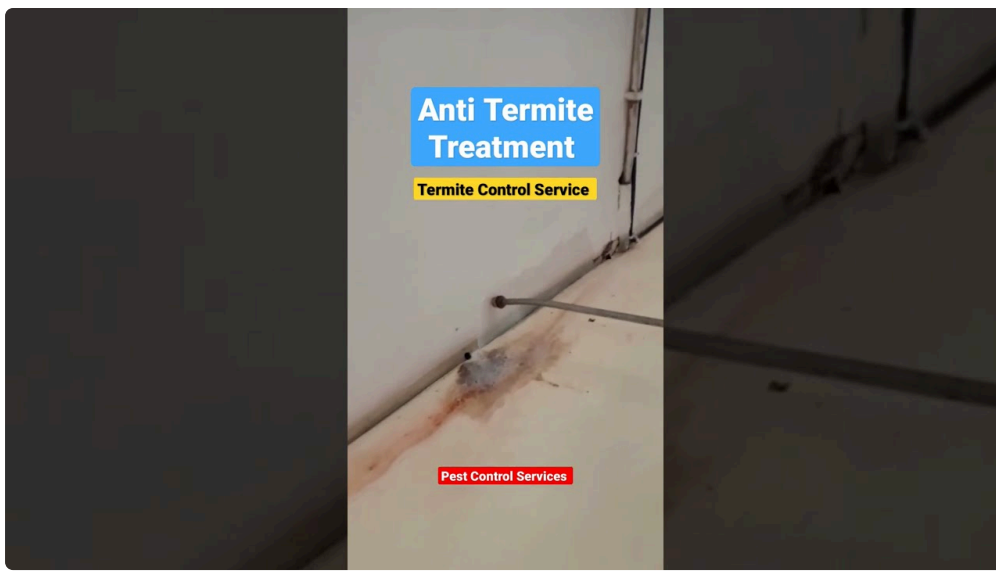
For homeowners searching phrases like Pest Control Near Me or Local Exterminators, be choosy. Ask whether the company provides Residential Pest Control and Commercial Pest Management, not because you run a storefront, but because commercial programs must survive health audits. That mindset benefits homes. Confirm they can handle specialties like Termite Control Solutions, Pest Control for Bed Bugs, and broader Insect Control Services under one umbrella. It simplifies scheduling and accountability.

Some firms price low and rely on volume. There is a place for budget maintenance, especially once your problem is under control. Upfront, though, the right partner will talk more about inspection and exclusion than unlimited sprays. True Affordable Pest Solutions prevent rework.

A brief field story for perspective

A family in Raleigh, North Carolina called about a “mild” ant problem on a kitchen island. They had cycled through three store-bought products in a month. Islands often hide plumbing stub-ups that come through the slab, a favorite ant entry. We pulled the toe-kick and found a sunken cavity filled with sawdust and insulation scraps, plus a steady stream of odorous house ants returning to a hidden seam. We treated with a non-repellent bait gel along the run, sealed the gap with silicone, and placed monitors. Ant counts fell to near zero in two days, but we did not declare victory until a two-week inspection showed a flat trend. Total chemical used, less than a tube of gel, because placement and sealing did the heavy lifting.

In another case near the Golden Gate Bridge, a homeowner had paid for multiple barrier sprays for spiders and still could not enjoy the deck. The issue was not product, it was lighting. They had installed bright white LEDs, insect magnets. We swapped bulbs to warmer spectra, reduced lawn irrigation overspray that attracted springtails, then spot-treated. Spider pressure dropped by more than half without chasing webs every week.



Commitment to careful, effective service

The goal is not to fill your house with treatments. The goal is a clean, quiet home with food sealed, water managed, and building gaps closed, backed by precise, minimal applications that interrupt pest life cycles. That is what experienced technicians deliver, whether you live under the palms of Florida, along Texas live oaks, in the stucco lines of California, the porches of Louisiana, the brick streets of Georgia, the bays of Alabama, the deltas of Mississippi, the lowcountry of South Carolina, or the pine ridges of North Carolina.

Pest Control Services Phone (888) 265-9332

Preparing your home before the inspection

You can help your technician by clearing access to key areas. Empty sink cabinets so traps and gels can be placed without contamination. Pull items back from garage walls by at least 18 inches so we can follow rodent runways and lay stations. Bag laundry or bedding if bed bugs are suspected, and avoid visiting friends until we assess. If termite activity is likely, trim shrubs away from the foundation and remove stacked firewood from direct contact with the house. These simple steps accelerate the process and often reduce your overall cost.

What to expect from a well-run service plan

An initial visit should feel like detective work. You will see flashlights follow lines, not random wand waving. Techs will talk about conducive conditions, not just what they will spray. Expect photographs or notes, a clear schedule for follow-ups, and instructions for you that go beyond "keep it clean." If a company cannot explain why they chose a specific bait for your ant species, or why they placed a monitor in a given corner, keep looking. Transparency is a good sign that you are paying for knowledge, not just a truck and a tank.

The bottom line

If any of the top ten signs are appearing at home, you are not dealing with a one-off visitor. You are looking at a habitat match that favors the pest. The longer it continues, the more entrenched it becomes, and the more likely it will cause damage or health issues. Professional help is not about surrender, it is about efficiency and safety. When you hire a team that blends inspection skill with targeted products and structural know-how, you solve the problem and keep it solved. That is the quiet house everyone wants, whether your nearest landmark is Miami

Beach, the Alamo, the Golden Gate, the French Quarter, Savannah's squares, the USS Alabama, Vicksburg's bluffs, Charleston's Battery, or North Carolina's Outer Banks.

Pest Control Services (888) 265-9332